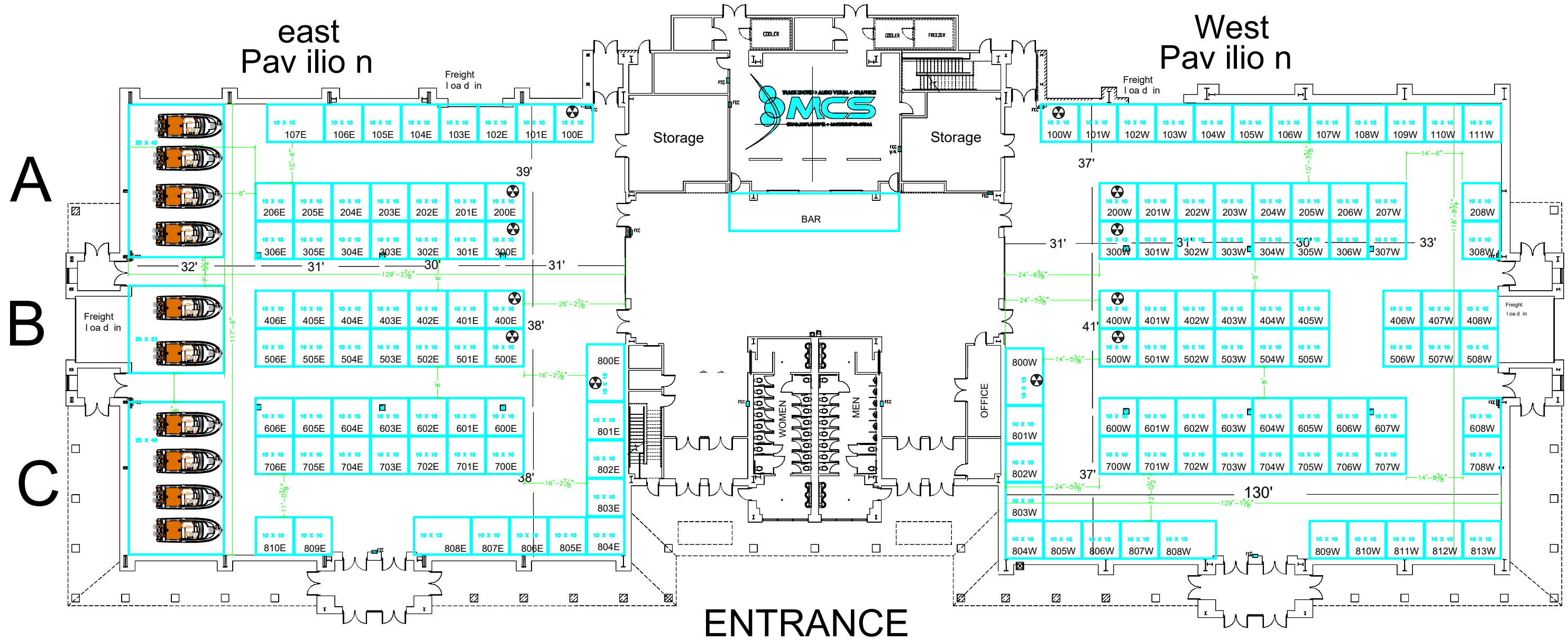


Kane County Fairgrounds



A

B

C

ENTRANCE

mcsexpo.com

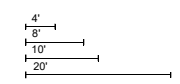


MCS
630.351.3976 • MCSEXPO.COM

*We specialize in
Trade Shows and Special Events*

Disclaimer:
Every effort has been made to ensure the accuracy of all information contained on this floor plan. However, no warranties, either expressed or implied are made with respect to this floorplan or the information encompassed by it.

Facility Floorplan



Last Revised: 7-20-09	VERSION: 1 of 1 Saved as: Kane County 6-2009	Drafted By: Dean Anderson
--------------------------	--	------------------------------

Kane County Fairgrounds

